

2011-2012

SOUTHERN ADVENTIST UNIVERSITY

Meal Plan Options

Here at Southern Adventist University, we have meal plans to meet your needs away from home.

Students who live in the residence halls have a meal plan of \$1,000 per semester. This money can be used toward meals at any of the dining options mentioned within this brochure.

Students residing in other university housing may purchase a meal plan of \$150, \$300, or \$450, with the option of adding to the plan in \$50 increments.

Community students may purchase food at any dining location with their campus card, and the fees will be applied to their account as a credit. Cash and major credit cards are also accepted for added convenience.

Dining locations operate on an à la carte system, so you will need to budget what you spend. If you exceed your budget, the additional dining charges will be applied to your student account. Meal plans are charged at the beginning of each semester and are non-refundable. Please use your meal plan wisely as they cannot be carried over from one semester to the next.

Students may check their balance at any time by visiting www.southern.edu/access and selecting "Campus Card Charges."



For additional information regarding dining services and menu options, please visit www.southern.edu/food.

Meal Plans and Dining



2010-2011



Dining Options

Campus meal options range from a home-cooked style meal in the Dining Hall, to real fruit smoothies at The Kayak. K.R.'s Place is styled like a café and serves hot sandwiches. The Campus Kitchen has a wide variety of food from breakfast options to a taco bar and sandwiches.

Each dining location offers the convenience of take out, and you'll be able to find a place to eat at any time during the day until 9 p.m. Monday to Thursday. On-campus eateries have limited operating hours on Friday, Saturday, and Sunday.

Village Market

Village Market is a completely vegetarian grocery store on campus that also has a deli with a daily lunch menu and sandwiches. Village Market accepts meal plan purchases for the deli, and other items may be charged under miscellaneous charges on your student account totalling up to \$150 per month. Village Market also accepts other major methods of payment such as cash, credit, and food stamps.

You can learn more about Village Market on the web at www.villagemarketcollegedale.com.

Dining Reference Card

Dining Hall	<i>Located in Wright Hall</i>	
Sunday:	12 p.m. - 1 p.m. 5 p.m. - 6 p.m.	Lunch Supper
Monday - Friday:	6:30 a.m. - 10 a.m. 10 a.m. - 10:30 a.m. 11:30 a.m. - 1:30 p.m. 1:30 p.m. - 2 p.m. 5 p.m. - 6:30 p.m. 5 p.m. - 6:15 p.m.	Hot B-fast Cont. B-fast Hot Lunch Sandwich Bar Supper Supper (Fri)
Sabbath:	12 p.m. - 2 p.m. 6 p.m. - 7 p.m.	Lunch Supper*
	<i>*Times vary with sundown.</i>	

Campus Kitchen	<i>Located in Fleming Plaza</i>
Sunday:	9 a.m. - 12 p.m.
Monday - Thurs:	7 a.m. - 9 p.m.
Friday:	7 a.m. - 1 p.m.
Sabbath:	Closed

K.R.'s Place	<i>Located in Wright Hall</i>
Sunday:	6 p.m. - 9 p.m.
Monday - Thurs:	9 a.m. - 9 p.m.
Friday:	9 a.m. - 1 p.m.
Sabbath:	Closed

The Kayak	<i>Located in Hulsey Wellness Center</i>
Sunday:	6:30 p.m. - 8:30 p.m.
Monday - Thurs:	11 a.m. - 9 p.m.
Sabbath:	Closed

Village Market	<i>Located in Fleming Plaza</i>
Sunday:	8 a.m. - 6 p.m.
Monday - Thurs:	7 a.m. - 9 p.m.
Friday:	7 a.m. - 4 p.m.
Sabbath:	Closed
Deli hotbar is open Mon-Fri, 10:30 a.m. - 2 p.m.	

Summer hours may vary from the above schedule.

[Home](#)[How to Get Here](#)[Places to Stay](#)[Places to Eat](#)[Say Hello](#)

WAU was founded in 1904. Recently we were selected by the U.S. News World Report among the Top 50 Best Northern Regional Colleges. Also the ENACTUS Team, formerly known as Students in Free Enterprise (SIFE), were named regional champions.

Visiting WAU: A visit to WAU includes meeting faculty members, getting to know your coaches, speaking with Admissions Counselors, talking and eating with current students, and a chance to attend our weekly campus convocation service. Find out what students do every day and get a feel for what life is like here at WAU.

The Gateway Tour – This is a great opportunity to learn more about the history and legacy of Washington Adventist University.

WAU at a Glance – A brief tour through our campus and a glimpse at our rich history.

On Site Admission Tour – Pick the tour that fits your schedule for the day. To be eligible for On Site Admissions, you must bring official transcripts and SAT/ACT test scores.

Schedule Your Visit Now

The Admissions Office is open for appointments during the following times*:

Monday: 10am-12pm and 1-4pm

Tuesday: 10am-12pm and 1-4pm

Wednesday: 9am-11am and 1-4pm

Thursday: 10am-12pm and 1-4pm

Friday: 10am-12pm

*Tours are not available on Weekends, National Holidays, or due to inclement weather.

UPCOMING EVENTS

July 26, 2013

Capital Summer Session Ends August 2, 2013

Early Registration August 8, 2013
[Click Here to Sign Up](#)

New/Transfer Orientation Begins August 18, 2013

New/Transfer

Join us for Open House
Sunday, April 7

Wilkinson Hall, 1 p.m. - 3 p.m.

This is YOUR chance to:

Meet Faculty

Attend Financial Aid Q&A Session

Talk to Academic Counselors

Speak with Coaches in Athletics

Schedule Music Auditions

Take a Campus Tour

**Enter a drawing to receive FREE
books for one semester!**

**Admissions decisions
made on site!**

Reserve YOUR place today!

Call 800-835-4212

or complete the form by visiting this link:

ADMISSIONS



Welkom

Aloha

Binvinutu

Bienvenida

WILLKOMMEN

Wilkom

Velkommen

Karibu

WELCOME

WELCOME CLASS OF 2017

Biology

ENGLISH

Music

Political Science

Psychology

Chemistry

Respiratory Care

Education

Business

Mathematics

HISTORY

Social Work

Religion

Philosophy

Journalism

Physical Education

Computer

Science

NURSING

WHAT'S YOUR PASSION?



[▶ Learn more](#)

Experience a

New
Perspective

with Biblical Counseling
CALL 877-246-2225

Sunday

March 23 & 30, 2014

School of **Graduate** and Professional Studies



We are dedicated
to the Pursuit of Excellence


MBA
Special **Online** Start
November 1, 2013
Call 877-246-2225

Degrees
Undergraduate
Graduate
Online Learning
Financial Aid
Current Students
Request Information
Apply Online



News and Events

Registration for November going on now!
Speak with your advisor to register for W14 term.
Remember to order your textbooks!

Follow Us 

Why Choose SGPS

For more than 25 years, WAU has been a leader in providing career building undergraduate degree programs for working professionals. WAU has continued to expand those offerings by adding graduate programs. This provides undergraduate students the opportunity to transition into graduate programs and continue to enhance their skills and competitive marketability.

Spotlight On Business Administration

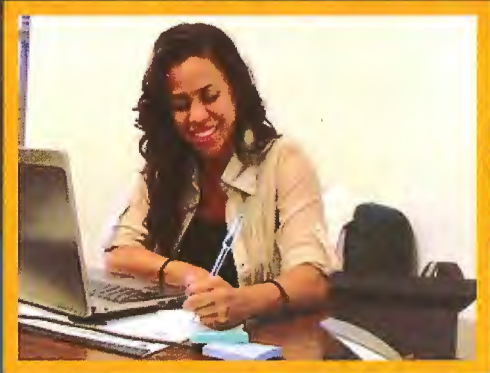


"We chose SGPS to study Business Administration because of the flexibility to work around our family's needs."
-Brian, BA Business Major



[DEGREE PROGRAMS](#) [FINANCIAL AID](#) [CURRENT STUDENTS](#) [REQUEST INFORMATION](#) [APPLY ONLINE](#)

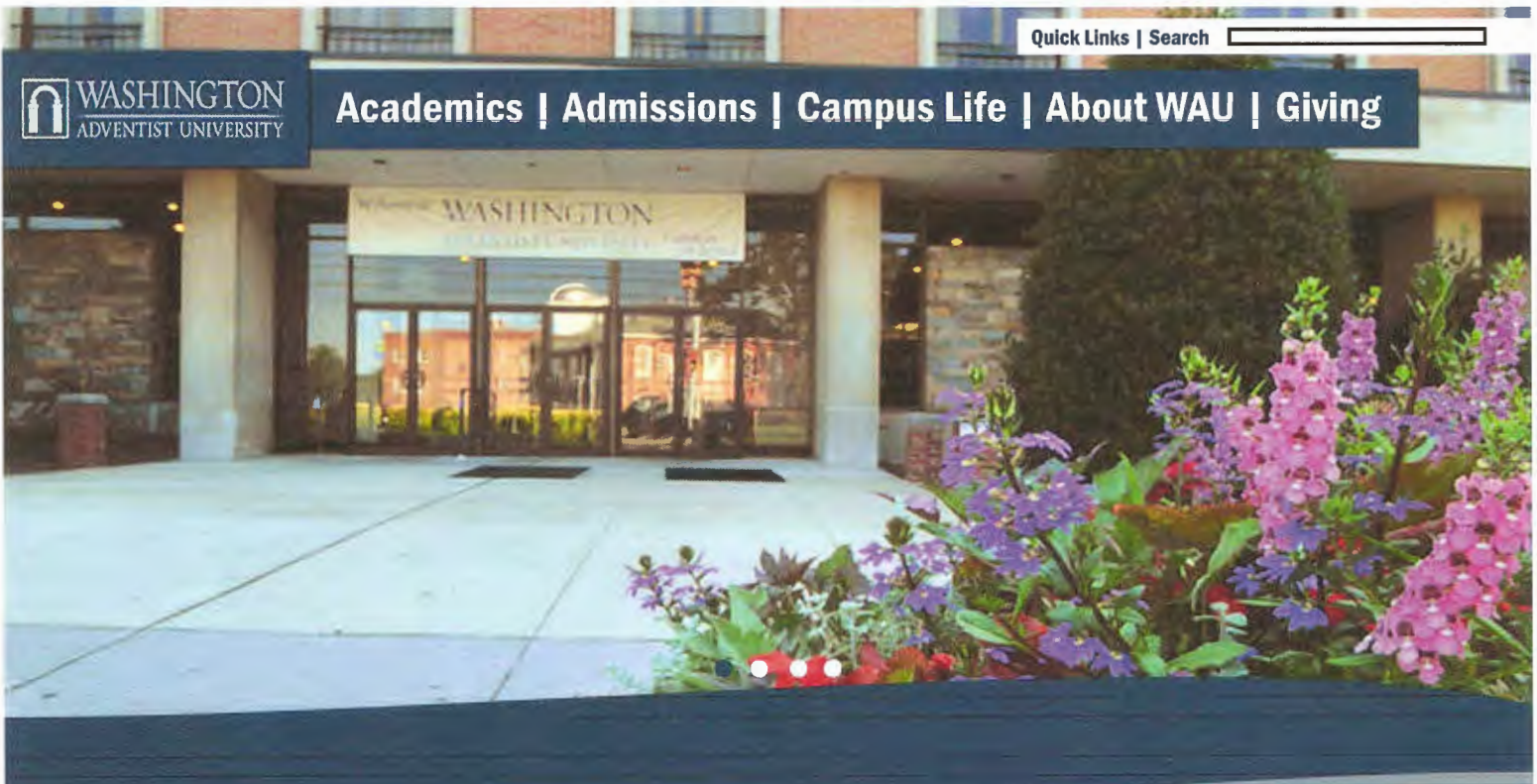
WORKING ADULTS



ONLINE EDUCATION



SCHOOL OF GRADUATE AND PROFESSIONAL STUDIES



Student Experiences



Enriching Studies



Dynamic Seasons

[Connect](#) | [Worship](#) | [Become](#)

Upcoming Events

February 14
Valentine's Day Banquet

February 15
Worship at Sligo Church

[All Events](#)

Campus News

New Homeland Security Program
Takoma Park, MD (Feb. 7)—Washington Adventist University (WAU) is entering the arena of Homeland Security education this March with the launch of three new certificates in Cyber Security, Homeland Security and Emergency Preparedness, and Disaster Response.

7600 Flower Ave. Takoma Park, Maryland 20912 Phone: 800-835-4212

